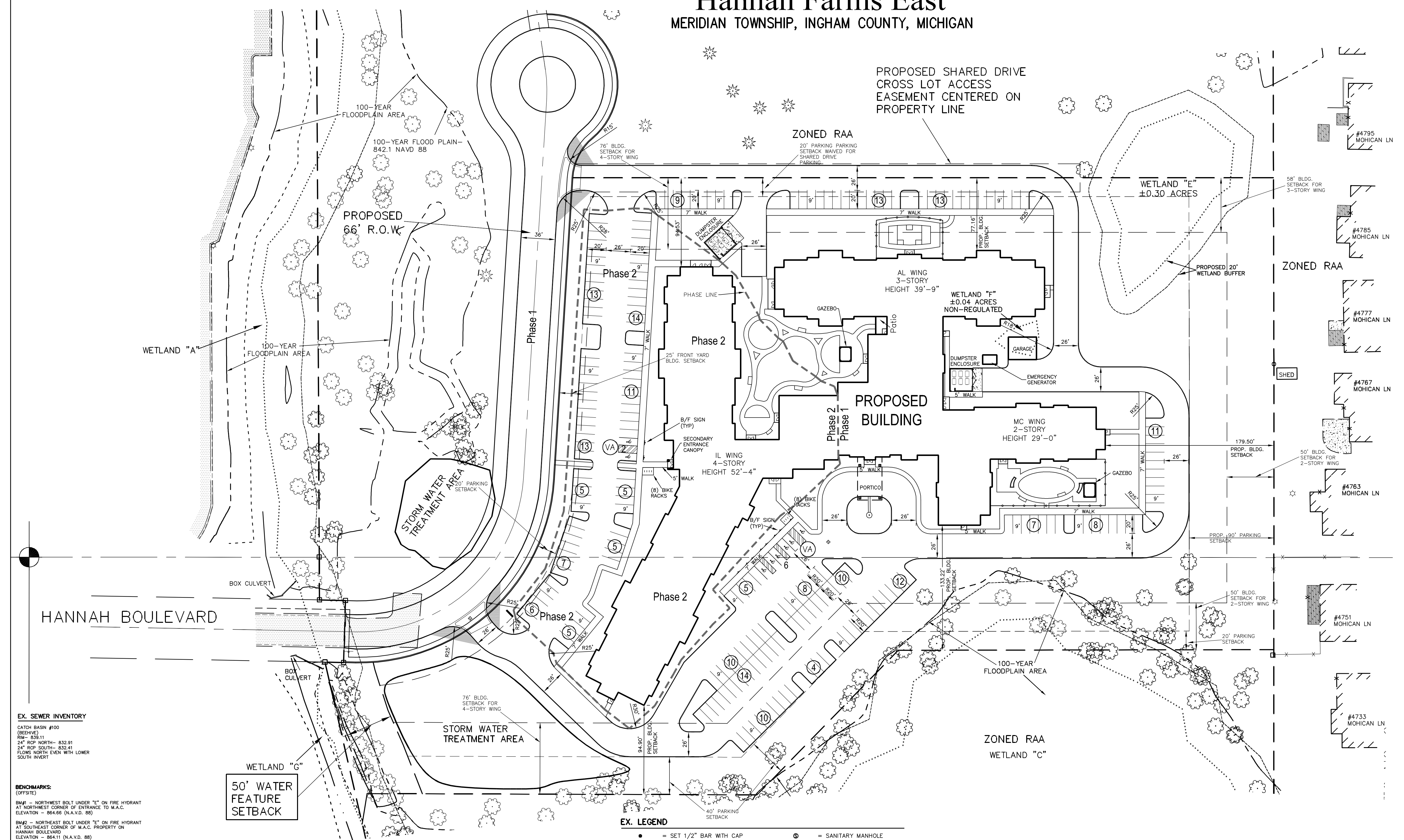
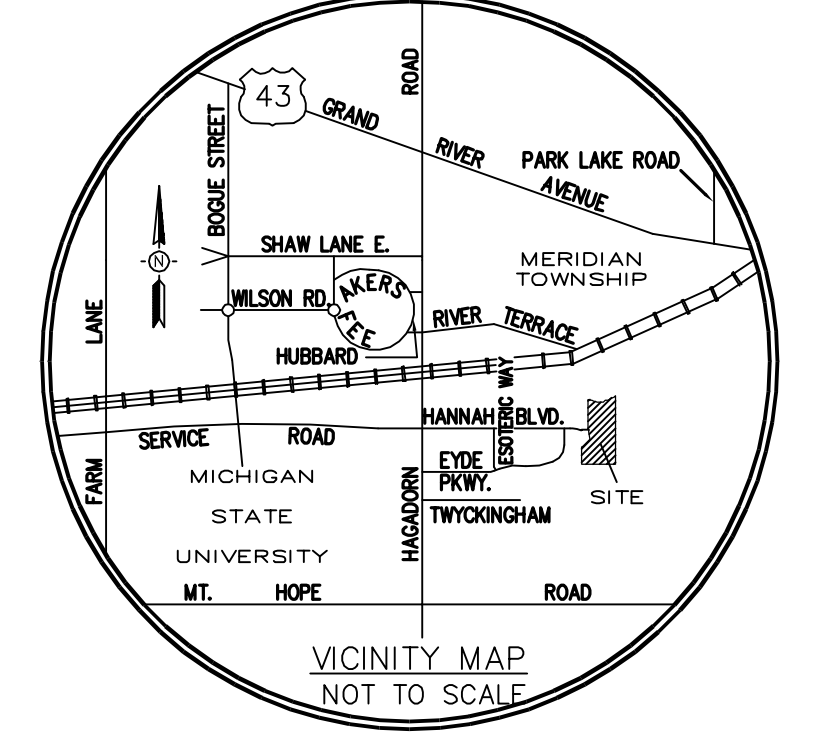
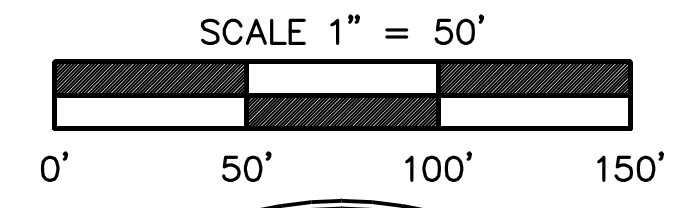
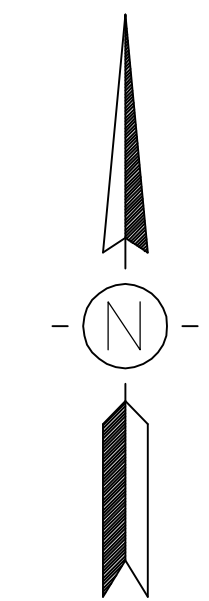


SUP PLAN FOR:  
**Hannah Farms East**  
 MERIDIAN TOWNSHIP, INGHAM COUNTY, MICHIGAN



**PROPOSED UNIT BREAKDOWN**

<b>Independent Living:</b>
(48) 1-bed apartments
(39) 1-bed plus den apartments
(28) 2-bed apartments
(6) Studio apartments
<b>Total 121 IL apartments</b>
<b>Assisted Living:</b>
(30) 1-bed apartments
(24) 1-bed plus den apartments
(4) 2-bed apartments
(9) Studio apartments
<b>Total 67 AL apartments</b>
<b>Memory care:</b>
(40) Memory care studio units
(2) 2-bed memory care units
<b>Total 42 units</b>

**EX. SEWER INVENTORY**

CATCH BASIN #100 (BEHIND)  
 RM# - 835.11  
 24" RCP NORTH - 832.91  
 24" RCP SOUTH - 832.41  
 FLOWS NORTH EVEN WITH LOWER SOUTH INVERT

**BENCHMARKS (OFFSITE)**

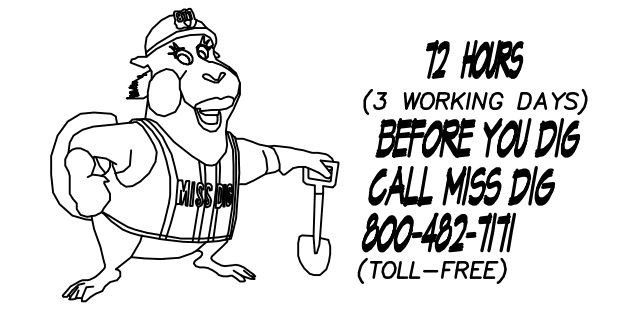
BM#1 - NORTHWEST BOLT UNDER "C" ON FIRE HYDRANT AT NORTHWEST CORNER OF ENTRANCE TO M.A.C. ELEVATION - 864.66 (N.A.V.D. 88)

BM#2 - NORTHEAST BOLT UNDER "E" ON FIRE HYDRANT AT SOUTHEAST CORNER OF M.A.C. PROPERTY ON HANNAH BOULEVARD ELEVATION - 864.11 (N.A.V.D. 88)

NOTE: WATER SHALL HAVE 10" HORIZONTAL SEPARATION & 18" VERTICAL SEPARATION FROM ALL SEWERS.

**LEGEND**

---	EXT. CONTOURS
---	EXT. WATER MAIN
---	EXT. SANITARY SEWER
---	EXT. STORM SEWER
---	EXT. ELEVATIONS
---	PROPOSED WATER MAIN
---	PROPOSED SANITARY SEWER
---	PROPOSED STORM SEWER
---	MANHOLE (NEW)
---	PROPOSED C.B. MANHOLE (EX.)
---	UTILITY EASEMENT
---	CENTER LINE OF ROAD
---	ROAD RIGHT OF WAY
---	PROPERTY LINE
---	FIRE HYDRANT
---	WATER VALVE
---	THRUST BLOCK
---	PROPOSED TOP OF CURB ELEV.



**EX. LEGEND**

●	SET 1/2" BAR WITH CAP	⊙	SANITARY MANHOLE
□	FOUND MONUMENT UNLESS NOTED	⊙	DRAINAGE MANHOLE
---	DISTANCE NOT TO SCALE	⊙	ELECTRIC MANHOLE
---	FENCE	⊙	TELEPHONE MANHOLE
---	ASPHALT	⊙	CATCH BASIN
---	CONCRETE	⊙	SANITARY CLEANOUT
---	GRAVEL	⊙	FIRE HYDRANT
---	EXISTING SPOT ELEVATION	⊙	VALVE
---	EXISTING CONTOUR ELEVATION	⊙	UTILITY POLE
---	GAS LINE	⊙	LIGHT POLE
---	UNDERGROUND TELEPHONE	⊙	GUY POLE
---	UNDERGROUND TELEVISION	⊙	GUY WIRE
---	UNDERGROUND ELECTRIC	⊙	UTILITY PEDESTAL
---	OVERHEAD WIRES	⊙	TRANSFORMER
---	WETLAND BOUNDARY	⊙	ELECTRIC METER
---	EDGE OF WOODS	⊙	GAS METER
---	DECIDUOUS TREE	⊙	WATER METER
---	CONIFEROUS TREE	⊙	SOIL BORING
---	BUSH	⊙	SIGN
---		⊙	POST

- ⓪ DENOTES PROPOSED NUMBER OF 9'x10' PARKING SPACES
- Ⓟ DENOTES PROPOSED VAN ACCESSIBLE SPACE
- ⓪ DENOTES PROPOSED NUMBER OF B/F SPACES

	<b>REVISIONS</b> 2-11-20 SUP SUBMITTAL 03-02-20 SUP		2116 HASLETT ROAD, HASLETT, MI 48840 PH. 517-339-1014 FAX. 517-339-8047 Marshall Office Ph. 269-781-9800
	<p align="center"><b>Hannah Farms East</b></p> <p align="center">DIMENSION PLAN</p>		
	SCALE: 1" = 50' DATE: 3-25-19 AUTHORIZED BY: Andev Group, LLC	DESIGNER: JWK PROJECT MGR. JWK	APPROVED BY: JWK SHEET 2 OF 6 JOB #: 96034

E-96034  
 SURVEY#89986TOP.JEFF